

# RICH VALLEY TOWNSHIP

Each township has six files containing six sections in each, and one file containing all 36 sections.

RichValley01to06.pdf  
RichValley07to12.pdf  
RichValley13to18.pdf  
RichValley19to24.pdf  
RichValley25to30.pdf  
RichValley31to36.pdf  
RichValleyAll36.pdf

The points are listed starting with the point above the SE corner and continuing in a counter-clockwise rotation around the section. This normally begins with the East point, Northeast, then North, but may also include Witness Corners, and/or Meander Corners.

## **Definitions**

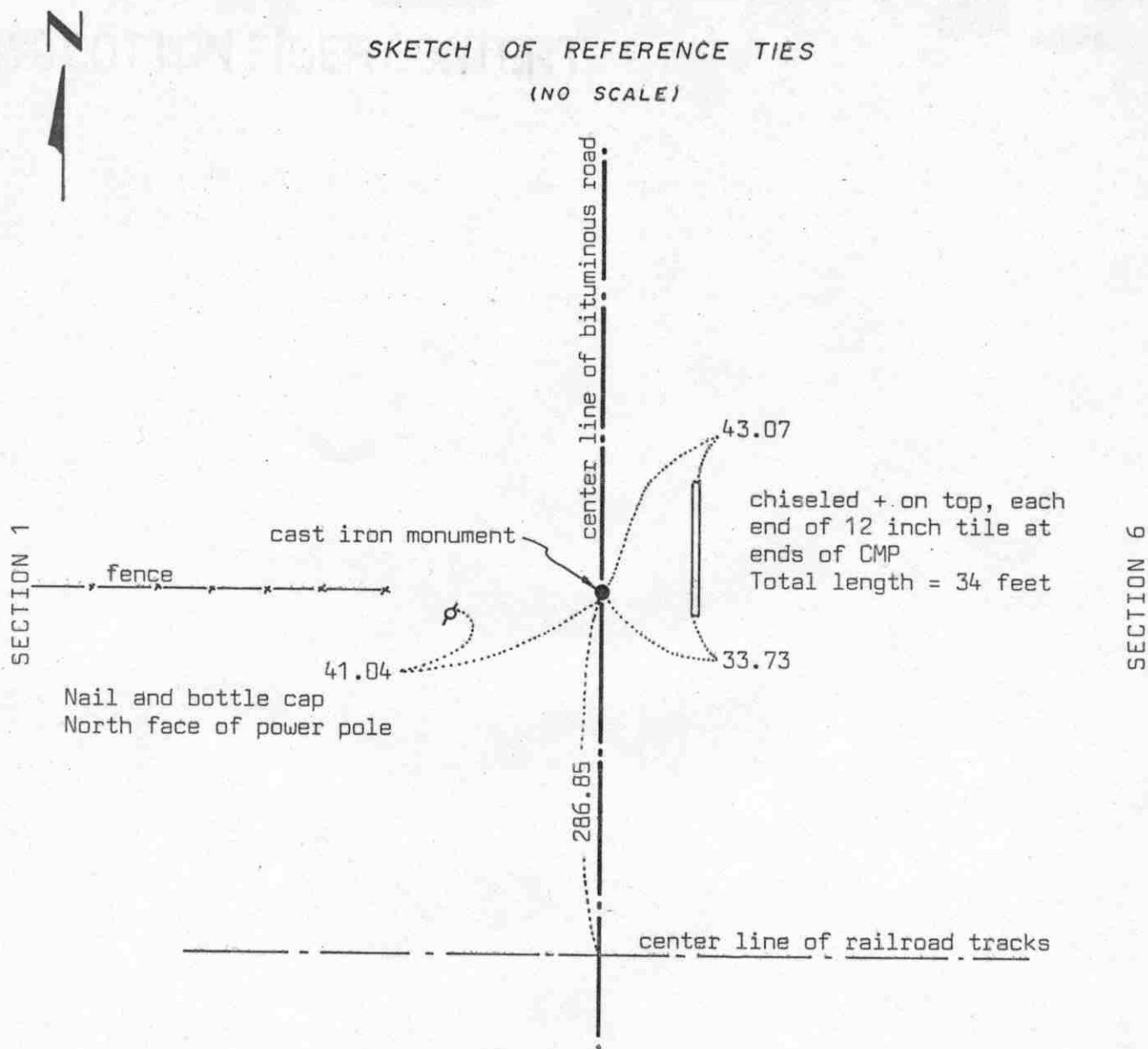
**Witness Corner:** A witness corner “stands in” when the true corner cannot be monumented or occupied because of difficult terrain or obstruction of the corner sight. The witness corner must be on the section line and is usually 5 or 10 chains away from the true corner.

**Meander Corner:** The intersection of a township, range, or section line and the banks of a navigable stream or meandering body of water.

EAST QUARTER corner, Section 1, Township 116 North, Range 28 West

# Certificate of Location of Government Corner

SKETCH OF REFERENCE TIES  
(NO SCALE)



Statement of evidence relative to this corner location on sheet 2

I hereby certify that this document was prepared by me or under my direct supervision.

Willard Pellinen

Willard Pellinen  
McLeod County Surveyor  
License No. 9626

Date 2/10/90

OFFICE OF THE COUNTY RECORDER  
MCLEOD COUNTY, MINNESOTA.

I hereby certify that this document was filed in this office at 3 o'clock P.M. on the 27th day of Feb, 1990.

Carmen Ostlie, County Recorder

By \_\_\_\_\_, Deputy

Document No. 232083

EAST QUARTER corner, Section 1, Township 116 North, Range 28 West

## Certificate of Location of Government Corner

This corner was originally set in 1855 by the General Land Office. John Ryan set the quarter section post at the south edge of a wet marsh and had reference ties to 2 bearing trees.

December, 1968. McCombs Knutson Associates (Dickman Knutson, county surveyor) measured the east line of Section 1 and set a temporary quarter corner on the center line of the road in line with fences east and west.

May, 1969. Knutson found an iron pin which was set over a stone. This was very close to their temporary corner. They set a McLeod County cast iron monument in place of the iron pin and stone and took reference ties.

July 23, 1987. We found the cast iron monument down 7 inches below the road surface, but all the reference ties were destroyed. We took new reference ties.

March 7, 1989. We found the monument in good condition and the reference ties good.

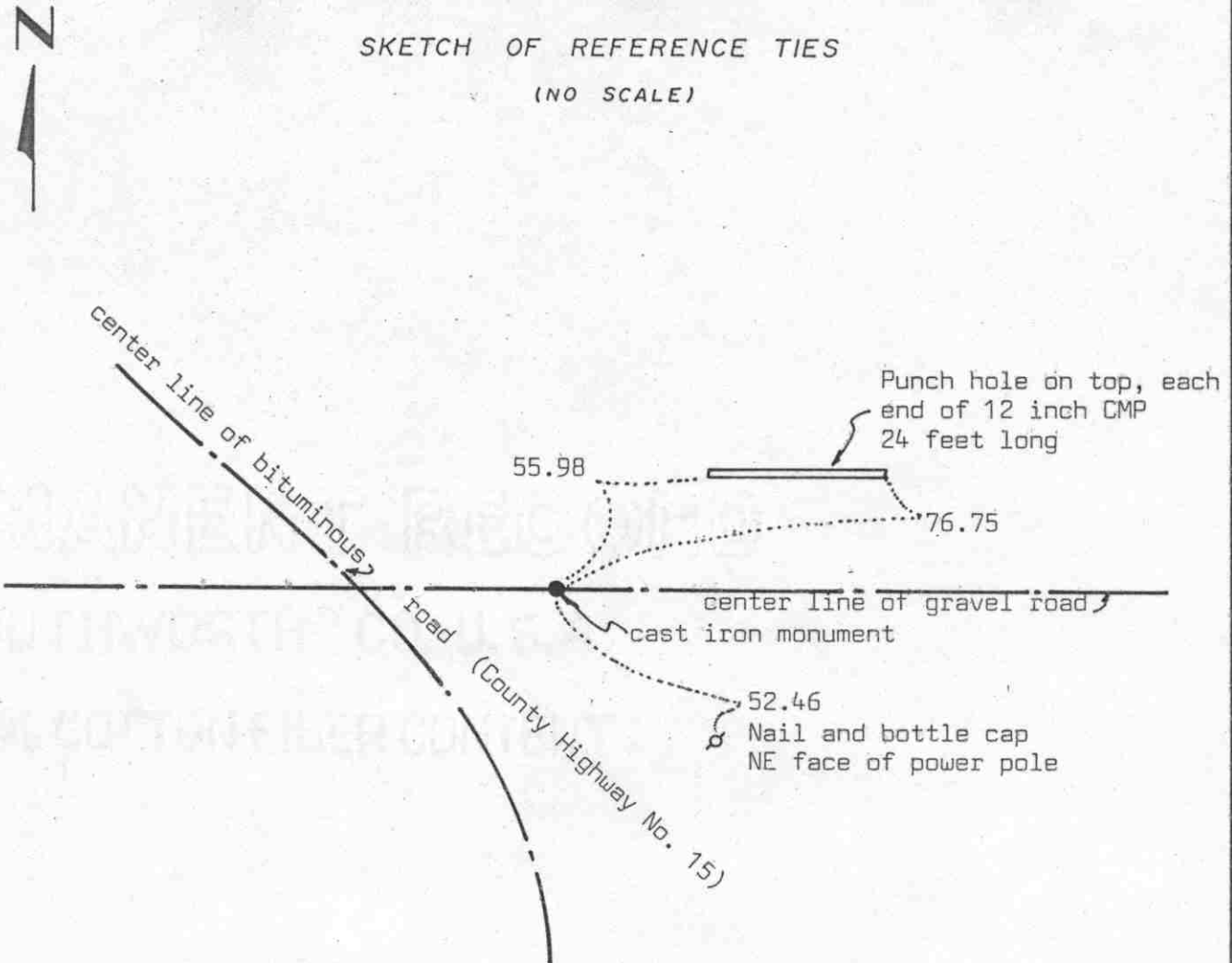
This corner is about 25 feet north of the proration of the government distances between the section corners.

NORTHEAST corner, Section 1, Township 116 North, Range 28 West

## Certificate of Location of Government Corner

SKETCH OF REFERENCE TIES

(NO SCALE)

Statement of evidence relative to this corner location on sheet 2

I hereby certify that this document was prepared by me or under my direct supervision.

Willard Pellinen

Willard Pellinen  
McLeod County Surveyor  
License No. 9626

Date 4/1/90

OFFICE OF THE COUNTY RECORDER  
MCLEOD COUNTY, MINNESOTA.

I hereby certify that this document was filed in this office at 4 o'clock P.M. on the 4th day of April, 1990.

Carmen Ostlie, County Recorder

By \_\_\_\_\_, Deputy

Document No. 232650

NORTHEAST corner, Section 1, Township 116 North, Range 28 West*Certificate of Location of Government Corner*

This corner was originally established by the Government Land Office in 1855. John Ryan set a post and took reference ties to 2 bearing trees.

1969. McCombs Knutson Associates, Dickman Knutson, county surveyor, dug for the corner and found a stone. This was within 10-12 feet of the government distance to the southwest corner of Section 31, T.117, R. 30. Knutson set a cast iron monument and took reference ties. Ortwin Seaman, road boss when this road was rebuilt, said they found stones at most of the corners along this line.

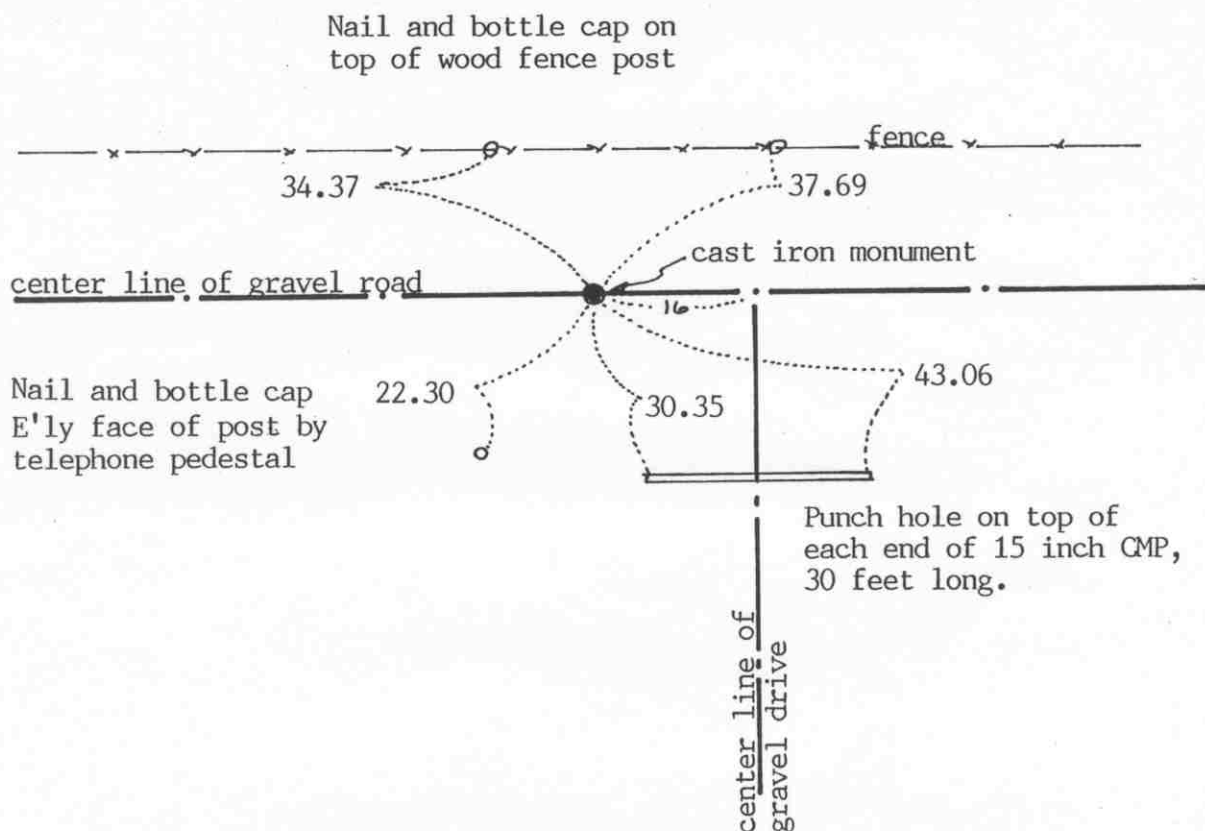
March 8, 1989. We found no reference ties remaining. We dug and found the corner down 6 inches below the road surface and took new reference ties.

We accept the monument set by Knutson as the correct location of the section corner because it perpetuates the location of the stone which we feel marked the corner.

NORTH QUARTER corner, Section 1, Township 116 North, Range 28 West

# Certificate of Location of Government Corner

## SKETCH OF REFERENCE TIES (NO SCALE)



Statement of evidence relative to this corner location on sheet 2

I hereby certify that this document was prepared by me or under my direct supervision.

Willard Pellinen

Willard Pellinen  
McLeod County Surveyor  
License No. 9626

Date Aug. 12, 1993

OFFICE OF THE COUNTY RECORDER  
MCLEOD COUNTY, MINNESOTA.

I hereby certify that this document was filed in this office at 9 o'clock A.M. on the 18th day of August, 19 93.

Carman Stille Mulder, County Recorder

By \_\_\_\_\_, Deputy

Document No. 254225

NORTH QUARTER corner, Section 1, Township 116 North, Range 28 West*Certificate of Location of Government Corner*

November 22, 1968. McCombs Knutson Associates (Dickman Knutson, county surveyor) measured the north line of Section 1 and set a temporary quarter corner on the center line of the east-west road and center line of a gravel drive to the south. They found a spike down 1 foot below the surface about 10 feet to the west.

1969. Property owners said the corner is west of the drive to the south. Knutson dug for the corner, John Tupa from Hutchinson with a backhoe, at the location of the found spike. They found a stone down below the original road bed and set available reference ties. Knutson set a cast iron monument in 1970.

June 17, 1993. We found the monument in good condition down 6 inches below the surface of the gravel road. Took new reference ties.

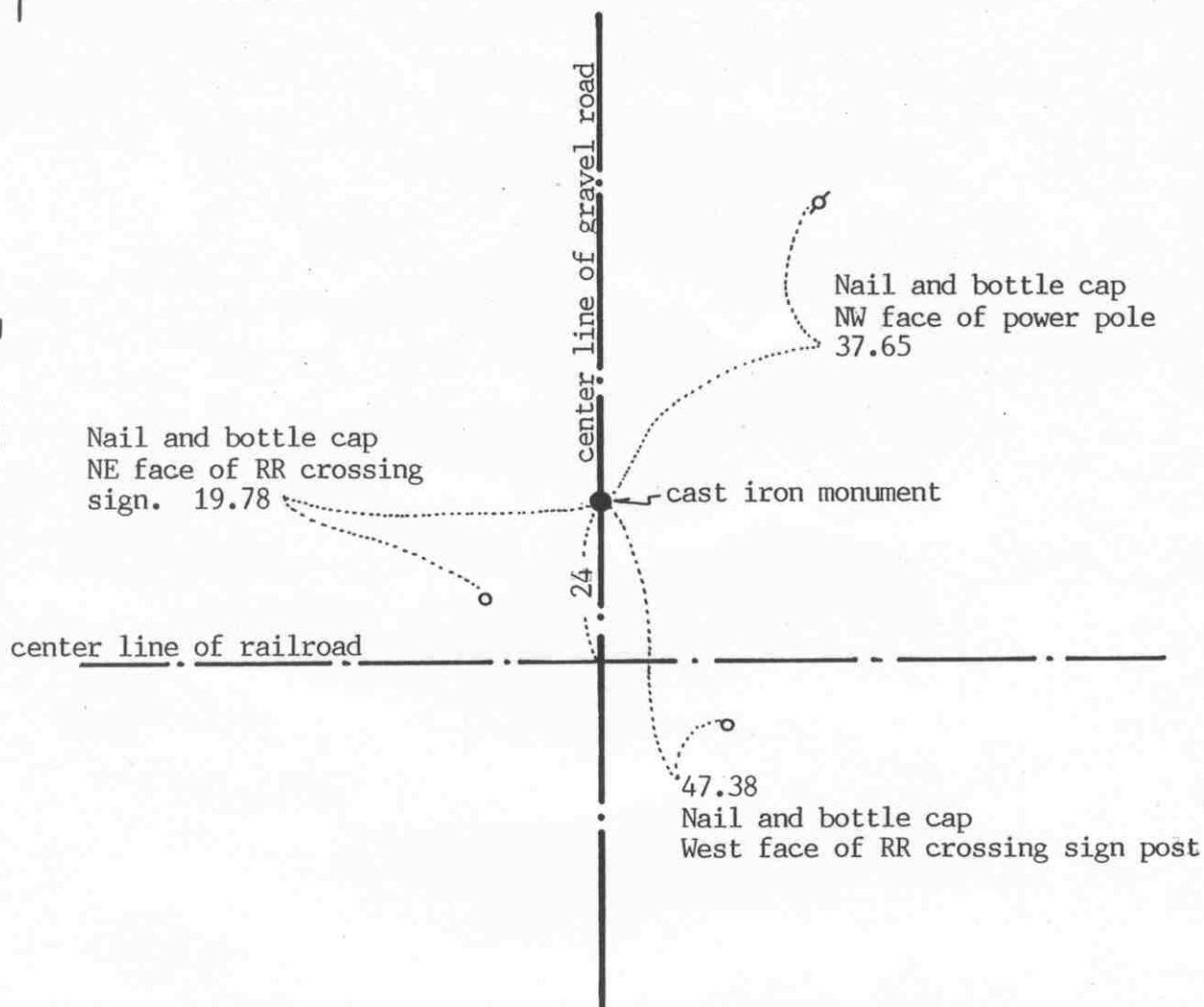
EAST QUARTER corner, Section 2, Township 116 North, Range 28 West

# Certificate of Location of Government Corner

SKETCH OF REFERENCE TIES  
(NO SCALE)

SECTION 2

SECTION 1



Statement of evidence relative to this corner location on sheet 2

I hereby certify that this document  
was prepared by me or under my  
direct supervision.

Willard Pellinen

Willard Pellinen  
McLeod County Surveyor  
License No. 9626

Date August 10, 1993

OFFICE OF THE COUNTY RECORDER  
MCLEOD COUNTY, MINNESOTA.

I hereby certify that this document was filed in this  
office at 9 o'clock A.M. on the 18th day  
of August, 19 93.

Norman Estlie, County Recorder

By \_\_\_\_\_, Deputy

Document No. 254227



EAST QUARTER corner, Section 2, Township 116 North, Range 28 West

## Certificate of Location of Government Corner

September, 1856. This corner was originally established by the General Land Office. D. L. Langton set a post and marked a 9 inch aspen and a 6 inch elm for bearing trees.

Railroad right of way plans show this corner to be 24 feet north of the railroad center line.

June 2, 1977. McCombs Knutson Associates (Dickman Knutson, county surveyor) dug for the corner, John Tupa from Hutchinson with a backhoe. They dug a hole 6 feet wide, 12 feet long and 4 feet deep on the center line of the north-south road, 24 feet north of the railroad center line, but found no evidence of the government corner.

July 7, 1977. Knutson set a spike on the center line of the road 24 feet north of the railroad center line as per the railroad right of way map, and took reference ties.

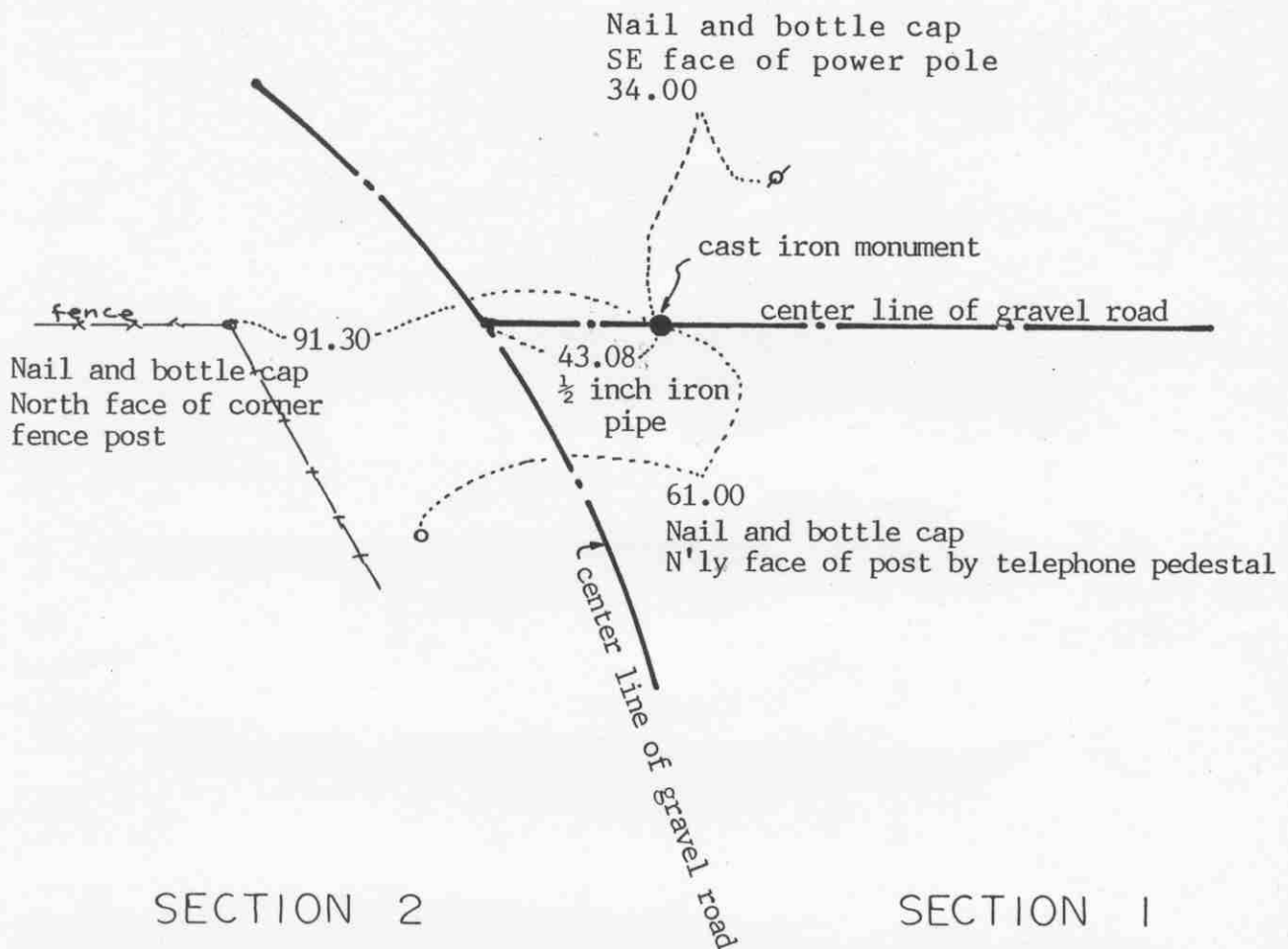
April 10, 1978. Knutson set a McLeod County cast iron monument at the corner.

June 17, 1993. We found the monument in good condition down 10 inches below the surface of the gravel road and took new reference ties.

NORTHEAST corner, Section 2, Township 116 North, Range 28 West

# Certificate of Location of Government Corner

## SKETCH OF REFERENCE TIES (NO SCALE)



Statement of evidence relative to this corner location on sheet 2

I hereby certify that this document  
was prepared by me or under my  
direct supervision.

Willard Pellinen

Willard Pellinen  
McLeod County Surveyor  
License No. 9626

Date August 10, 1993.

OFFICE OF THE COUNTY RECORDER  
MCLEOD COUNTY, MINNESOTA.

I hereby certify that this document was filed in this  
office at 9 o'clock A.M. on the 18th day  
of August, 1993.

Carman St. Lie & Gilder, County Recorder

By \_\_\_\_\_, Deputy

Document No. 254226

NORTHEAST corner, Section 2, Township 116 North, Range 28 West

## *Certificate of Location of Government Corner*

September, 1856. D.L.Langton of the General Land Office originally established this corner. He set a post and marked 2 ten inch aspens for bearing trees.

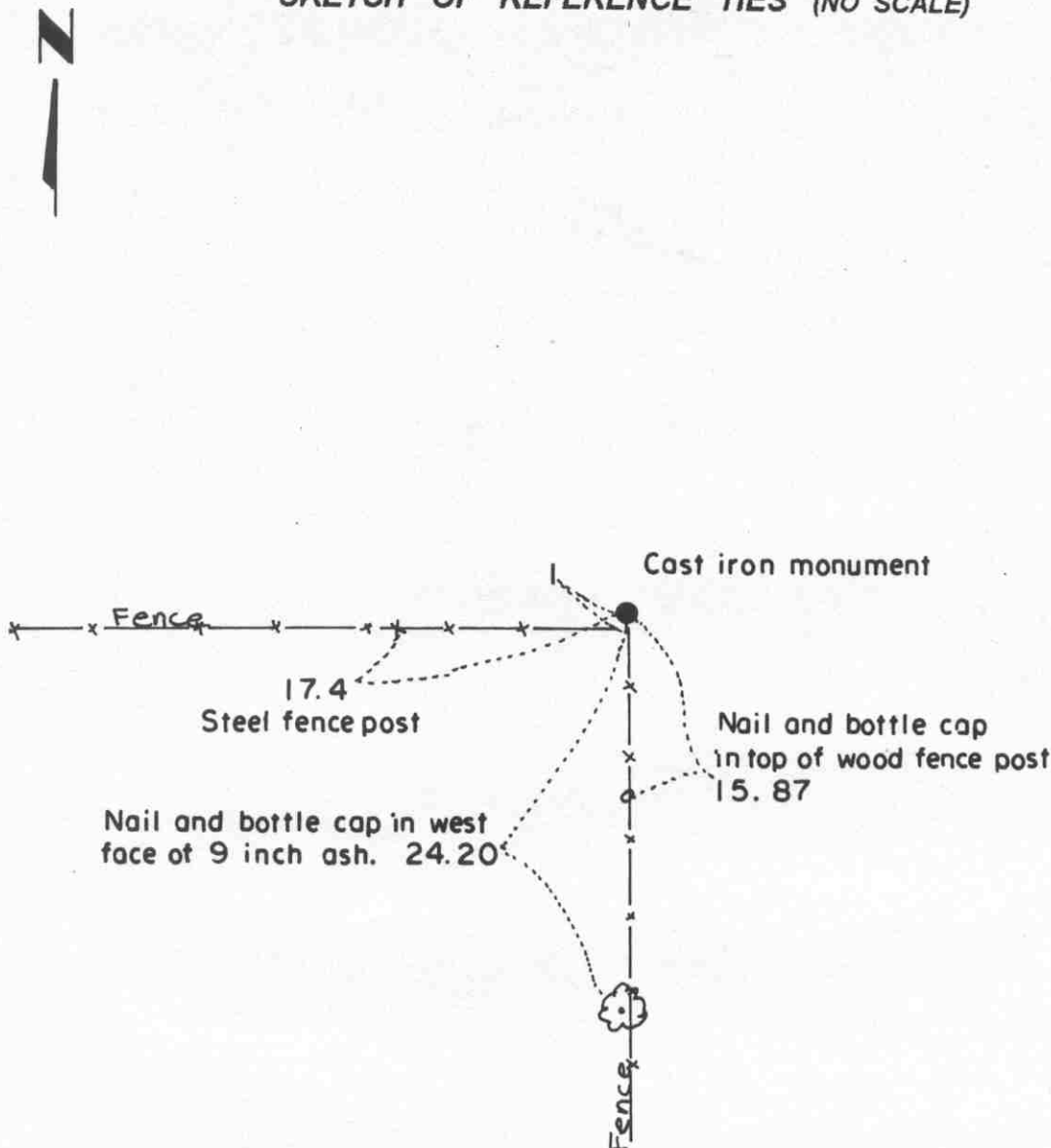
1969. McCombs Knutson Associates (Dickman Knutson, county surveyor) excavated for the corner, John Tupa from Hutchinson with a backhoe. Down below the original road bed they found a stone and a wood stake. They tied it off and Knutson set a McLeod County cast iron monument at the corner. Mr. Ortwin Seaman, road boss when the road was rebuilt, said they found stones at most of the government corners along this road. The stone was on the center line of the east-west road, on the northerly extension of the center line tangent of the road to the south.

June 17, 1993. We found the monument in good condition down 5 inches below the surface of the gravel road and took new reference ties.

# Certificate of Location of Government Corner

North Quarter corner, Section 2, Township 116 North, Range 28 West

## SKETCH OF REFERENCE TIES (NO SCALE)



### Statement of evidence relative to this corner location on sheet 2

I hereby certify that this document was prepared by me or under my direct supervision.

Willard Pellinen

Willard Pellinen  
McLeod County Surveyor  
License No. 9626.

Date Nov. 6, 1995

OFFICE OF THE COUNTY RECORDER  
MCLEOD COUNTY, MINNESOTA

269327

I hereby certify that this document was filed in this office at 9 o'clock A. M. on the 14th day of November 19 95.

Carmen Ostlie Mulder County Recorder

By \_\_\_\_\_, Deputy.

Document No. \_\_\_\_\_

**Certificate of Location of Government Corner**  
**North Quarter corner, Section 2, Township 116 North, Range 28 West**

**November 23, 1968. McCombs Knutson Associates (Dickman Knutson, county surveyor) found a stone at the fence intersection. Fences south and west. Adjoining land owners agree this is the quarter corner.**

**1969. Knutson replaced the stone with a McLeod County cast iron monument and took available reference ties.**

**July 5, 1995. We found the monument in good condition and took new ties.**

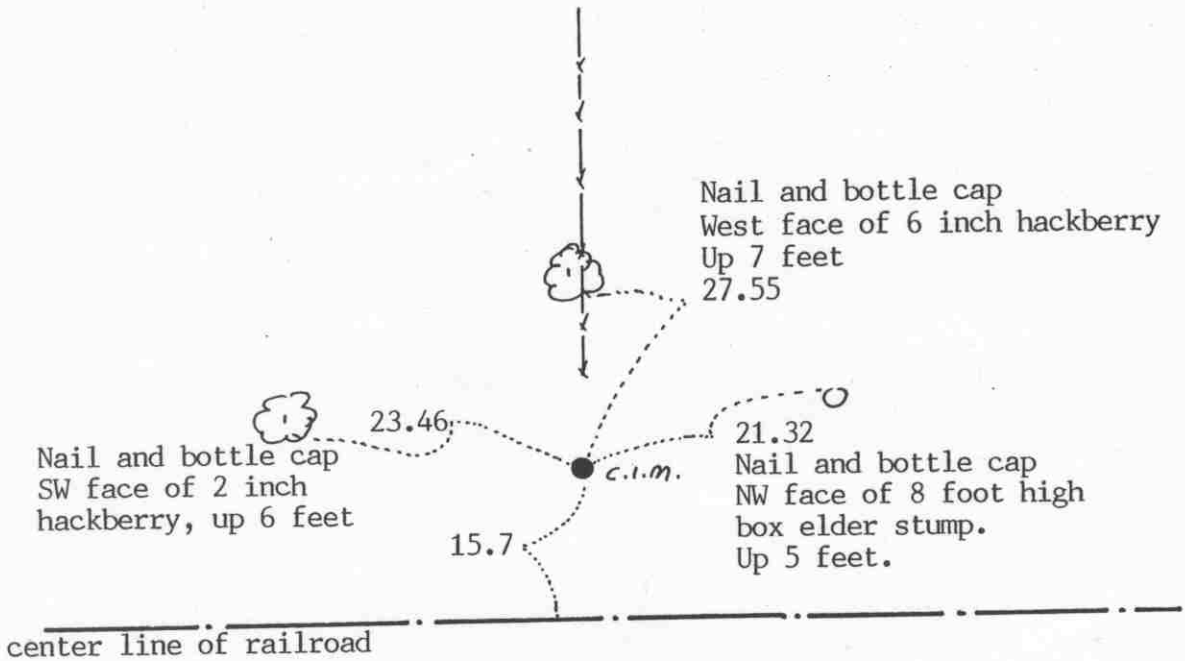
EAST QUARTER corner, Section 3, Township 116 North, Range 28 West

# Certificate of Location of Government Corner

SKETCH OF REFERENCE TIES  
(NO SCALE)

SECTION 3

SECTION 2



Statement of evidence relative to this corner location on sheet 2

I hereby certify that this document was prepared by me or under my direct supervision.

Willard Pellinen  
Willard Pellinen  
McLeod County Surveyor  
License No. 9626

Date August 13, 1993

OFFICE OF THE COUNTY RECORDER  
MCLEOD COUNTY, MINNESOTA.

I hereby certify that this document was filed in this office at 9 o'clock A.M. on the 18th day of August, 1993.

Carmen Estlie Mulder, County Recorder

By \_\_\_\_\_, Deputy

Document No. 254228

EAST QUARTER corner, Section 3, Township 116 North, Range 28 West*Certificate of Location of Government Corner*

September, 1856. This corner was originally established by the General Land Office. D. L. Langton set a post and marked an 8 inch oak and an 8 inch walnut for bearing trees.

Railroad right of way map shows the quarter corner to be 16 feet north of the railroad center line.

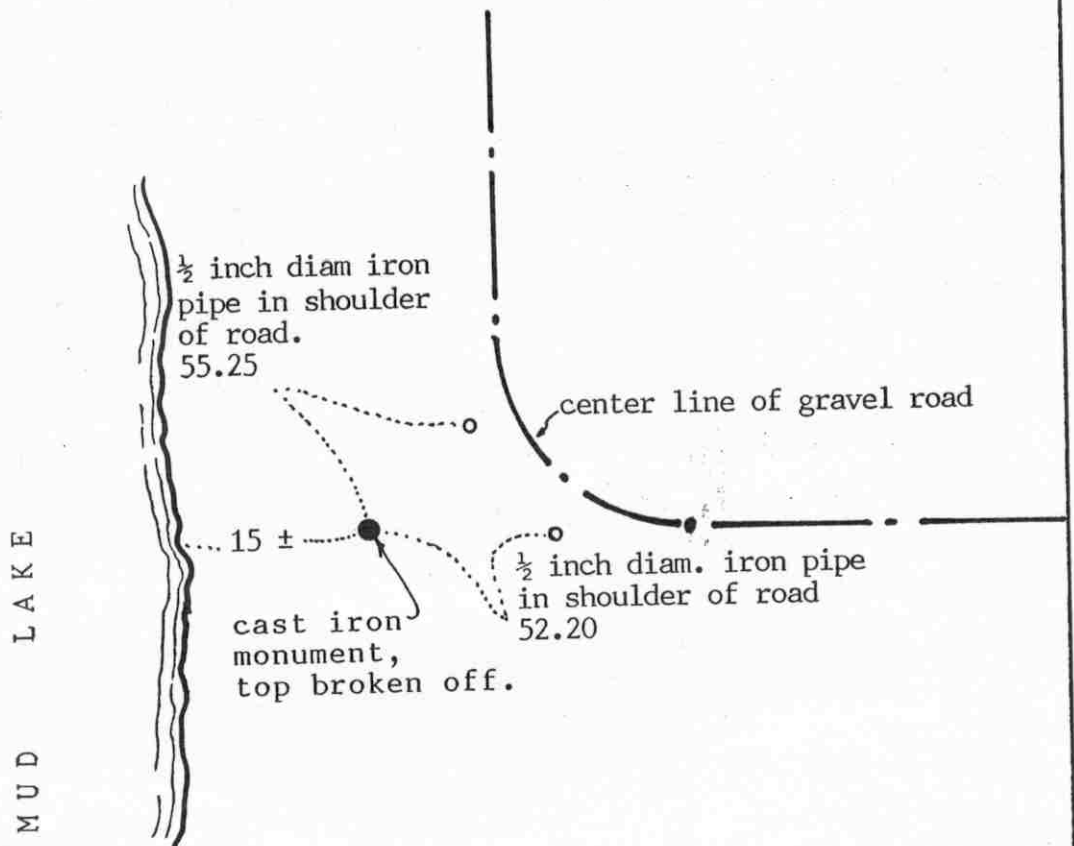
June 21, 1972. Dickman Knutson, county surveyor, searched and dug in the area shown on the railroad map and found a rotted wood stake approximately 16 feet north of the center line of the tracks in line with a fence to the north.

August 23, 1973. Knutson replaced the wood stake with a McLeod County cast iron monument and took reference ties.

June 18, 1993. We found the top 12 inches of the cast iron monument broken off. Bottom of monument in good condition. We reset the top of the monument over the bottom and took new reference ties. Top of monument is flush with the ground.

NORTHEAST corner, Section 3, Township 116 North, Range 28 West

## Certificate of Location of Government Corner

SKETCH OF REFERENCE TIES  
(NO SCALE)

SECTION 3

SECTION 2

Statement of evidence relative to this corner location on sheet 2

I hereby certify that this document was prepared by me or under my direct supervision.

Willard Pellinen

Willard Pellinen  
McLeod County Surveyor  
License No. 9626

Date Feb. 1, 1994

OFFICE OF THE COUNTY RECORDER  
MCLEOD COUNTY, MINNESOTA.

I hereby certify that this document was filed in this office at 9 o'clock A. M. on the 7th day of February, 1994.

Carmen Petric Hulder, County Recorder

By Jan Petrick, Deputy

Document No. 257719



NORTHEAST

corner, Section 3, Township 116 North, Range 28 West

## Certificate of Location of Government Corner

September, 1856. D. L. Langton of the General Land Office originally established this corner. He set a post and marked a 10 inch aspen and a 10 inch linden for bearing trees.

1969. Dickman Knutson, county surveyor, found a wood post and replaced it with a McLeod County cast iron monument and took available reference ties.

December 29, 1993. We found the monument had been broken. Top of monument broken off. We found the bottom of the monument in good condition down 12 inches below the surface of the ground and took available reference ties.

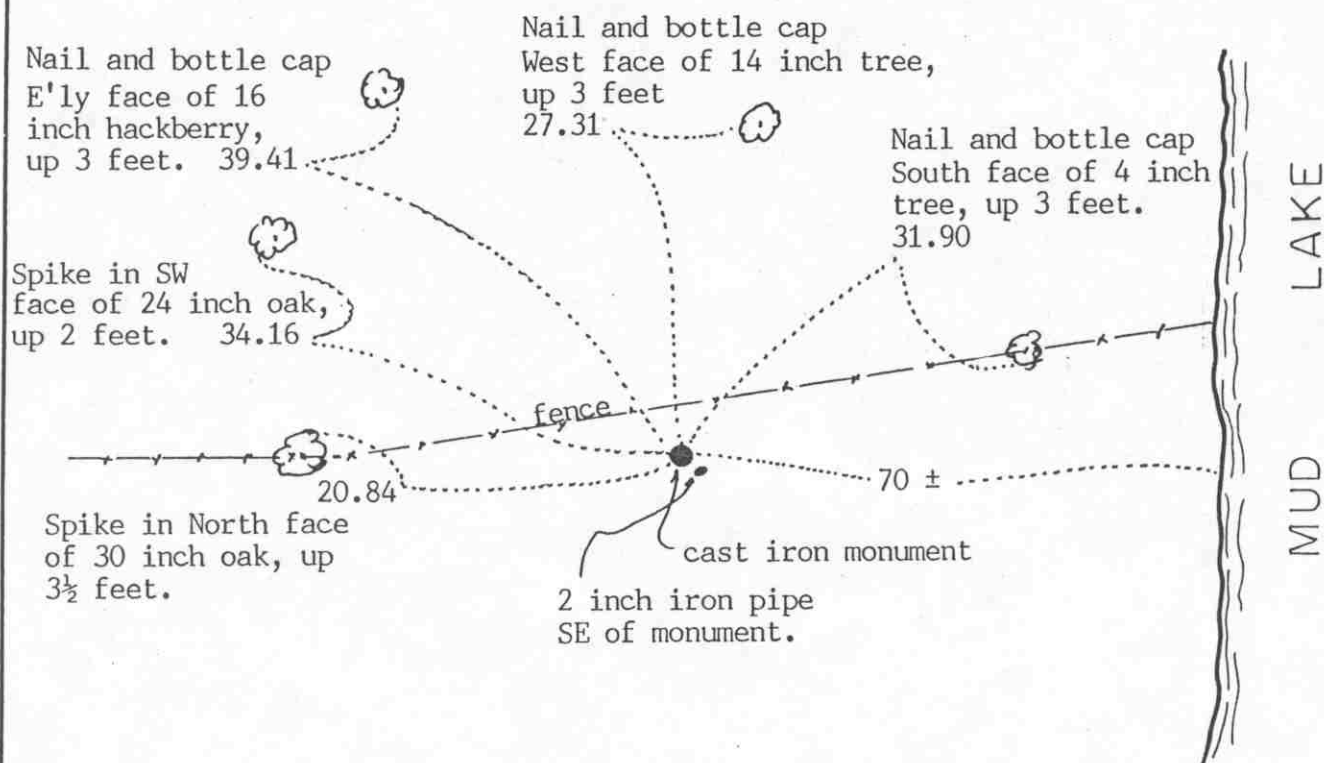
MEANDER No. 1 corner, Section <sup>3</sup>34, Township <sup>116</sup>117 North, Range <sup>28</sup>28 West

## Certificate of Location of Government Corner

## SKETCH OF REFERENCE TIES

(NO SCALE)

SECTION 34 T. 117 R. 28



SECTION 3 T. 116 R. 28

Statement of evidence relative to this corner location on sheet 2

I hereby certify that this document  
was prepared by me or under my  
direct supervision.

Willard Pellinen

Willard Pellinen  
McLeod County Surveyor  
License No. 9626

Date Feb. 1, 1994.

OFFICE OF THE COUNTY RECORDER  
MCLEOD COUNTY, MINNESOTA.

I hereby certify that this document was filed in this  
office at 9 o'clock A.M. on the 7th day  
of February, 1994.

Carmen Bethie Mulder, County Recorder

By Jon Potrick, Deputy

Document No. 257731

MEANDER No. 1  
corner, Section \_\_\_\_\_, Township \_\_\_\_\_ North, Range \_\_\_\_\_ West

## *Certificate of Location of Government Corner*

1855. John Ryan of the General Land Office originally established this corner. He set a post and marked a 7 inch butternut and a 24 inch linden for bearing trees.

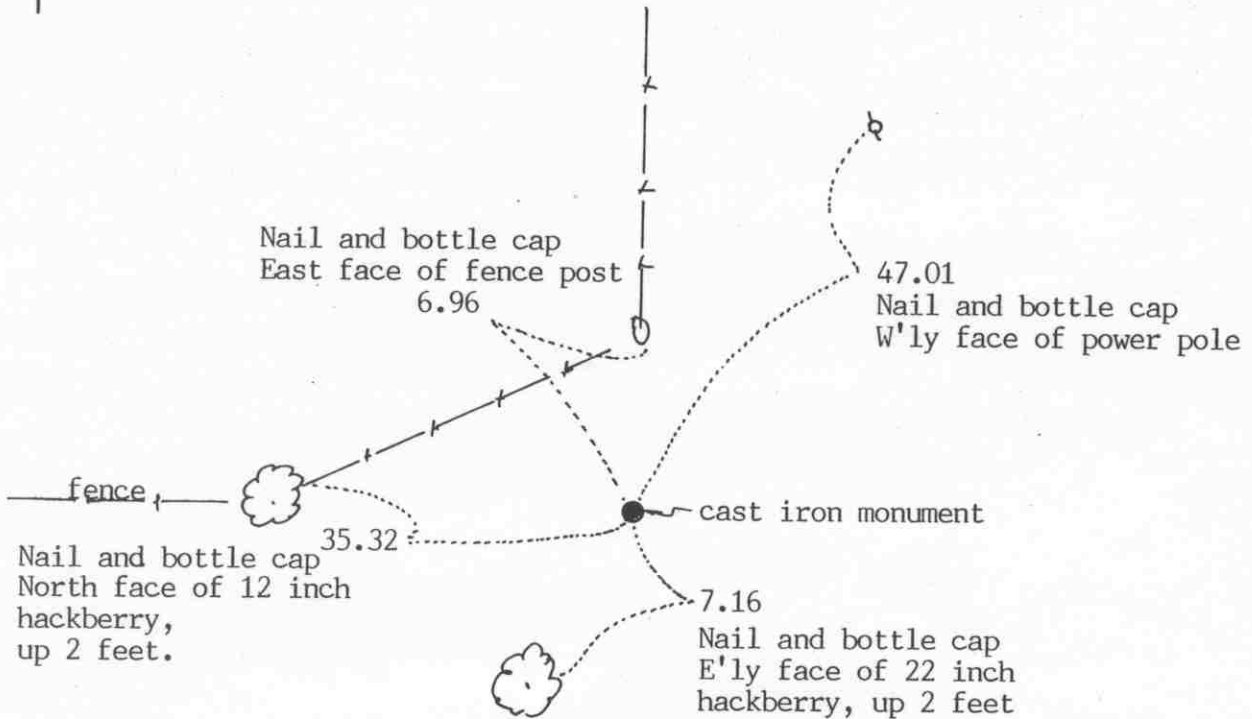
April 14, 1981. We set the meander corner on a proration of government distances between the south quarter corner and the computed southeast corner of Section 34. The southeast corner falls in the lake and we computed the location half way between the south quarter corner of Section 34 and the south quarter corner of Section 35. We set a cast iron monument and took available reference ties. Government distance to the south quarter corner was 29.65 chains (1956.9 feet). Our distance is 1943.77 feet. Government distance to the southeast corner was 10.35 chains (683.1 feet). Our distance is 678.52 feet.

December 29, 1993. We found the monument in good condition down 4 inches below the surface and took new reference ties.

NORTH QUARTER corner, Section 3, Township 116 North, Range 28 West

# Certificate of Location of Government Corner

## SKETCH OF REFERENCE TIES (NO SCALE)



Statement of evidence relative to this corner location on sheet 2

I hereby certify that this document was prepared by me or under my direct supervision.

Willard Pellinen

Willard Pellinen  
McLeod County Surveyor  
License No. 9626

Date July 21, 1993

### OFFICE OF THE COUNTY RECORDER MCLEOD COUNTY, MINNESOTA.

I hereby certify that this document was filed in this office at 4 o'clock P.M. on the 27th day of July, 1993.

Armenia Belle Mulder, County Recorder

By \_\_\_\_\_, Deputy

Document No. 253811

NORTH QUARTER corner, Section 3, Township 116 North, Range 28 West*Certificate of Location of Government Corner*

June, 1969. McCombs Knutson Associates (Dickman Knutson, county surveyor) found a stone and a wood stake at the fence intersection, fences east, west and south. Knutson replaced the stone with a McLeod County cast iron monument and took reference ties.

May 16, 1986. We checked the monument for line on the standard parallel and found it to be 6.58 feet south of the standard parallel. We reset the monument 6.58 feet north and took new reference ties.

March 3, 1993. We found the monument in good condition and checked the reference ties.

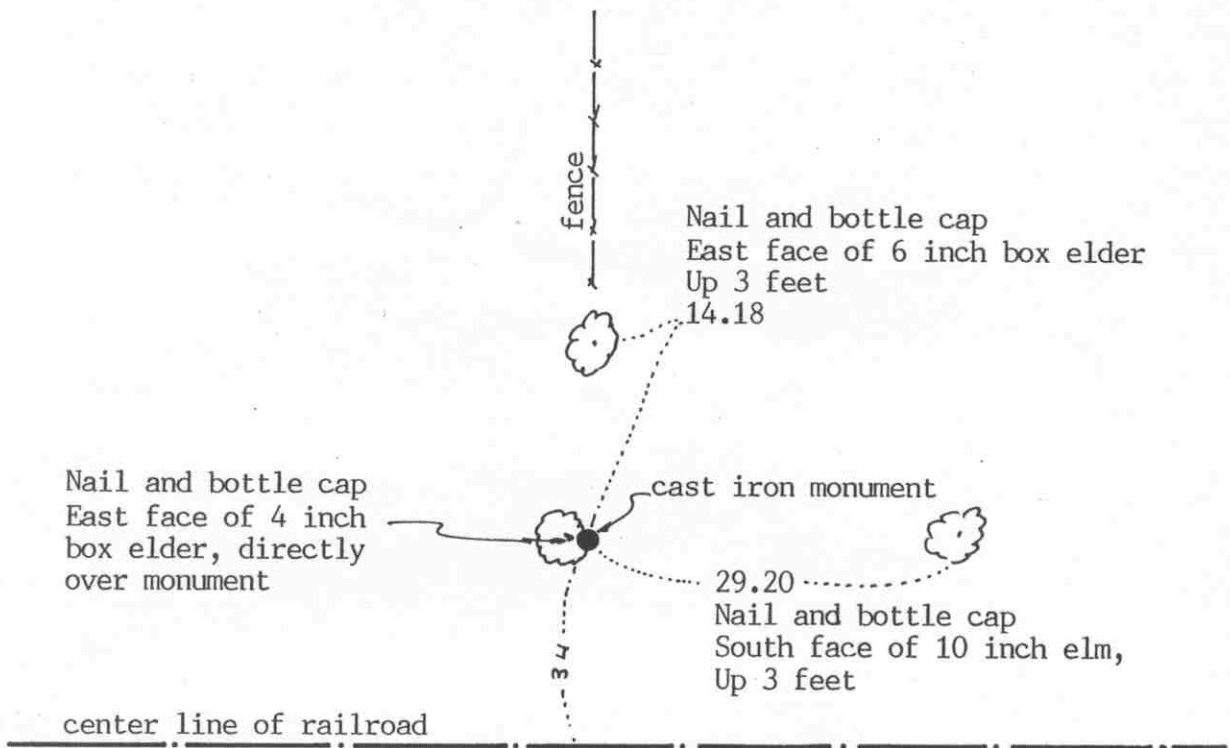
EAST QUARTER corner, Section 4, Township 116 North, Range 28 West

## Certificate of Location of Government Corner

SKETCH OF REFERENCE TIES  
(NO SCALE)

SECTION 4

SECTION 3



Statement of evidence relative to this corner location on sheet 2

I hereby certify that this document  
was prepared by me or under my  
direct supervision.

Willard Pellinen

Willard Pellinen  
McLeod County Surveyor  
License No. 9626

Date August 13, 1993

OFFICE OF THE COUNTY RECORDER  
MCLEOD COUNTY, MINNESOTA.

I hereby certify that this document was filed in this  
office at 9 o'clock A.M. on the 18th day  
of August, 19 93.

Carman Estlin Mulder, County Recorder

By \_\_\_\_\_, Deputy

Document No. 254229

EAST QUARTER corner, Section 4, Township 116 North, Range 28 West

## Certificate of Location of Government Corner

September 1856. This corner was originally established by the General Land Office. D. L. Langton set a post and marked a 7 inch and an 8 inch aspen for bearing trees.

May 23, 1931. E. L. Higgins, county surveyor, found a wood post 33.8 feet north of the center line of the railroad.

June 21, 1972. McCombs Knutson Associates (Dickman Knutson, county surveyor) found a steel axle 34 feet north of the railroad center line in line with fences to the north and south.

May 28, 1972. Knutson replaced the found axle with a McLeod County cast iron monument and took available reference ties.

1987. We measured the east line of Section 4 and had a distance of 2730.42 feet to the northeast corner of Section 4 compared with 2729.4 by Higgins in 1931. The quarter corner is approximately 13.4 feet west of a straight line between the section corners and about 6 feet south of a proration of the government distances to the northeast and southeast corners of Section 4.

June 18, 1993. We found the monument in good condition at the base of a 4 inch box elder. (tree leans over monument) No old ties remaining so we took new available ties.

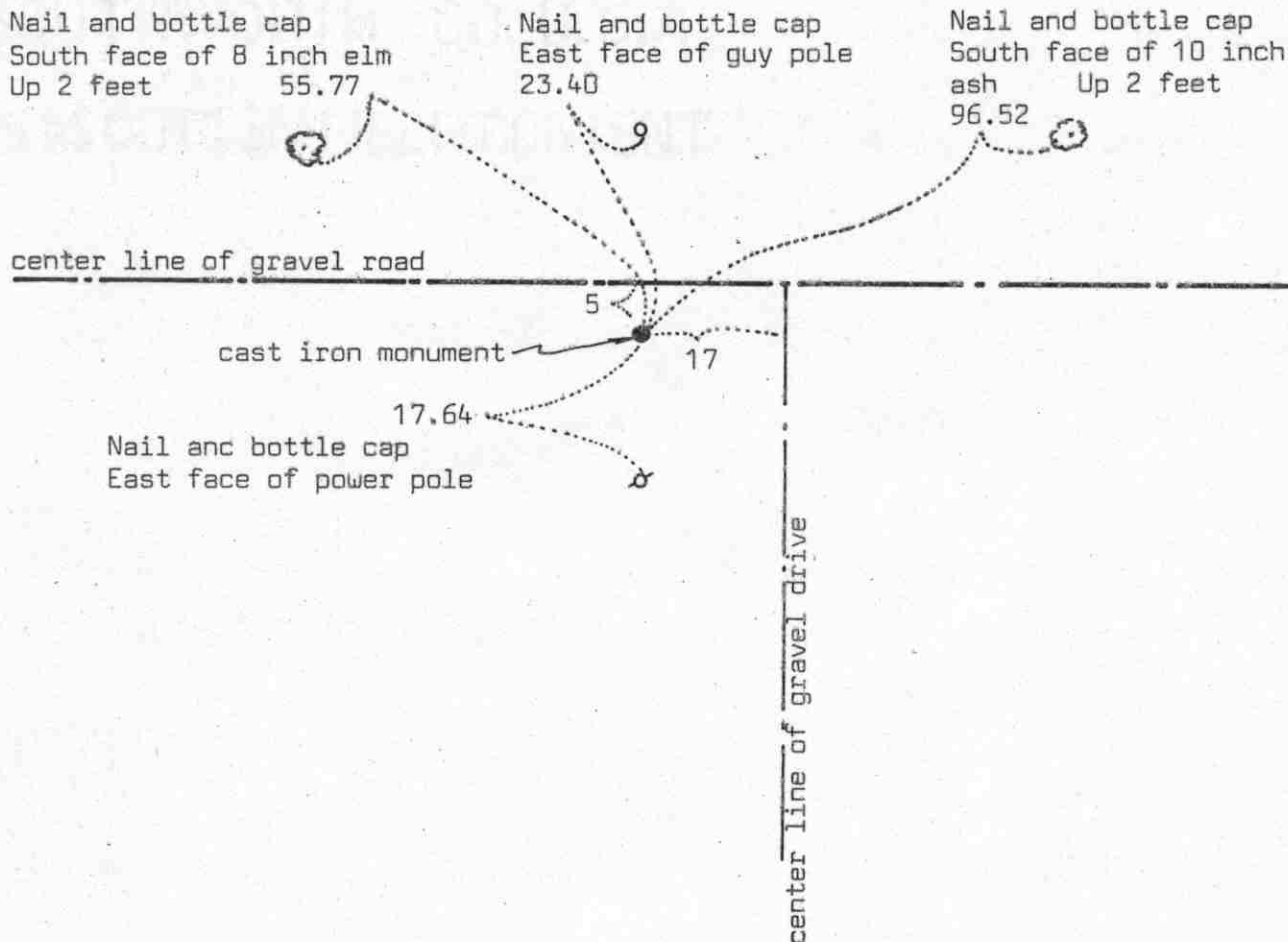
NORTHEAST corner, Section 4, Township 116 North, Range 28 West

# Certificate of Location of Government Corner



## SKETCH OF REFERENCE TIES

(NO SCALE)



Statement of evidence relative to this corner location on sheet 2

I hereby certify that this document was prepared by me or under my direct supervision.

Willard Pellinen

Willard Pellinen  
McLeod County Surveyor  
License No. 9626

Date 4/3/90

OFFICE OF THE COUNTY RECORDER  
MCLEOD COUNTY, MINNESOTA.

I hereby certify that this document was filed in this office at 4 o'clock P.M. on the 2nd day of May, 1990.

Carmen Postle, County Recorder

By                     , Deputy

Document No. 233083



NORTHEAST

corner, Section 4, Township 116 North, Range 28 West

## Certificate of Location of Government Corner

1855. This corner was originally established in 1855 by John Ryan of the General Land Office. He set a post and had reference ties to 2 bearing trees.

1968. McCombs Knutson Associates, Dickman Knutson, county surveyor, found a stone about 4-5 feet south of the center line of a gravel road. This was on the standard parallel, in line between the southwest and south quarter corner of Section 34, T 117, R 28. It was also within 6 feet of the government distance to the southwest corner of Section 35 and within 4 feet of the government distance to the east quarter corner of Section 4. Knutson set a McLeod County cast iron monument and took reference ties.

March 23, 1989. We found only 1 reference tie remaining. We dug up the cast iron monument, down 4 inches below the road surface in good condition, and took additional ties.

We believe the stone found by Knutson had perpetuated the correct location of the section corner.

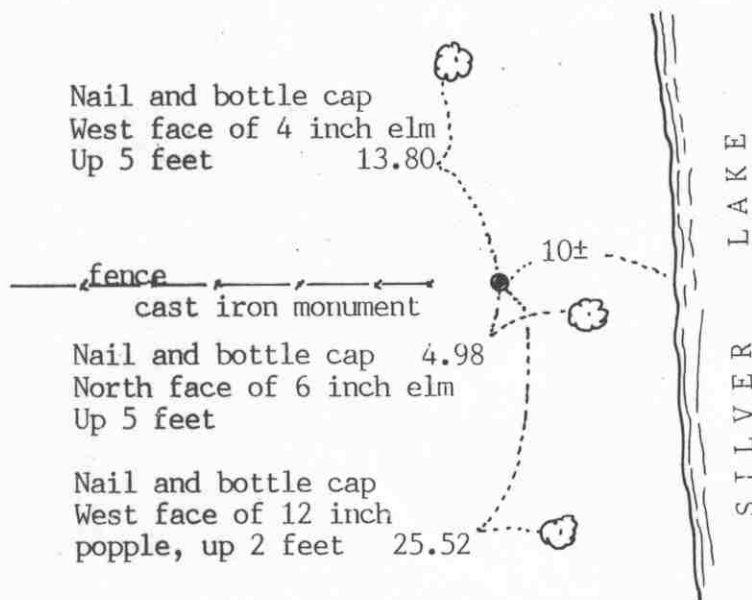
WITNESS corner, Section 4, Township 116 North, Range 28 West

# Certificate of Location of Government Corner

## SKETCH OF REFERENCE TIES (NO SCALE)

SECTION 33, T. 117, R. 28

Computed meander corner  
is 1.52 feet east of this  
witness corner on easterly  
extension of line from  
SW cor Sec 33.  
Angle at MC is  $177^{\circ}07'16''$   
on south side of line to  
computed MC on east side  
of Silver Lake.



SECTION 4, T. 116, R. 28

## Statement of evidence relative to this corner location on sheet 2

I hereby certify that this document  
was prepared by me or under my  
direct supervision.

Willard Pellinen

Willard Pellinen  
McLeod County Surveyor  
License No. 9626

Date Oct. 23, 1991

### OFFICE OF THE COUNTY RECORDER MCLEOD COUNTY, MINNESOTA.

I hereby certify that this document was filed in this  
office at 9 o'clock A. M. on the 9th day  
of January, 1992.

Carmen Ostlie, County Recorder

By \_\_\_\_\_, Deputy

Document No. 242763 NO FEE

Witness corner, Section 4, Township 117<sup>116</sup> North, Range 28 West

## Certificate of Location of Government Corner

Witness corner to Meander Corner No. 8, along south line of Section 33, west of Silver Lake. North line of Sec. 4)

1855. John Ryan of the General Land Office set a meander post on the west side of Silver Lake.

1967. McCombs Knutson Associates (Dickman Knutson, county surveyor) found an iron monument and replaced it with a McLeod County cast iron monument and took reference ties.

June 15, 1987. We measured the south line of Section 33 and found the monument to be 1.52 feet west of the computed location of Meander corner No. 8.

January 25, 1991. We found the monument in good condition 2 inches below the surface but all the old reference ties had been destroyed. We took new reference ties.

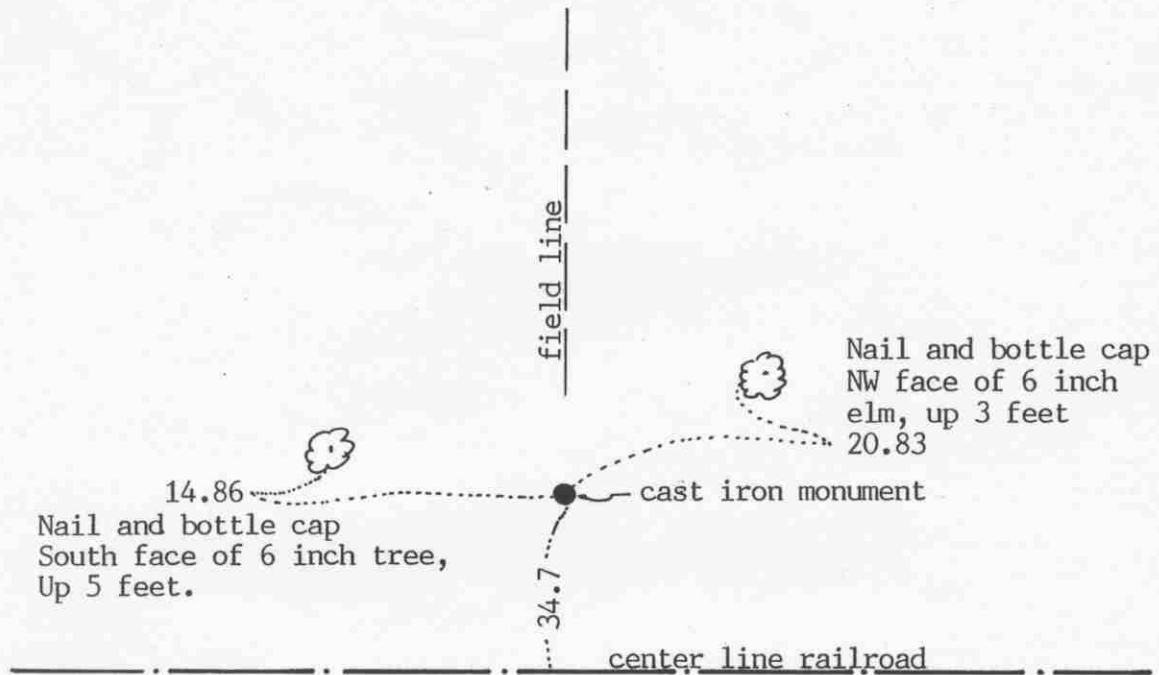
EAST QUARTER corner, Section 5, Township 116 North, Range 28 West

## Certificate of Location of Government Corner

SKETCH OF REFERENCE TIES  
(NO SCALE)

SECTION 5

SECTION 4



Statement of evidence relative to this corner location on sheet 2

I hereby certify that this document  
was prepared by me or under my  
direct supervision.

Willard Pellinen

Willard Pellinen  
McLeod County Surveyor  
License No. 9626

Date August 13, 1993

OFFICE OF THE COUNTY RECORDER  
MCLEOD COUNTY, MINNESOTA.

I hereby certify that this document was filed in this  
office at 9 o'clock A.M. on the 18th day  
of August, 19 93.

Carmen Ethel Mulder, County Recorder

By \_\_\_\_\_, Deputy

Document No. 254231

EAST QUARTER corner, Section 5, Township 116 North, Range 28 West*Certificate of Location of Government Corner*

September, 1856. This corner was originally established by the General Land Office. D. L. Langton set a post and marked 2 six inch aspens for bearing trees.

June 9, 1939. E.L.Higgins, county surveyor, found a stone at the corner, about 2 rods north of the center line of the railroad.

June 21, 1972. McCombs Knutson Associates (Dickman Knutson county surveyor) found a stone, 8 inches by 4 inches by 30 inches long, (set on end) about 35 feet north of the center line of the railroad, in line with a field line to the south. Mr. Jim Wanous, 68 years old and had lived in the Southwest Quarter of Section 5 all his life, had uncovered the top of the stone and marked the location with a lath. He testified that the stone was the quarter corner.

May 28, 1974. Knutson took reference ties to the stone and replaced it with a McLeod County cast iron monument. He laid the stone beside the monument.

1987. We found the monument in good condition and measured the east line of Section 5. The quarter corner is about 23 feet south and 5 feet east of a lost location for the corner.

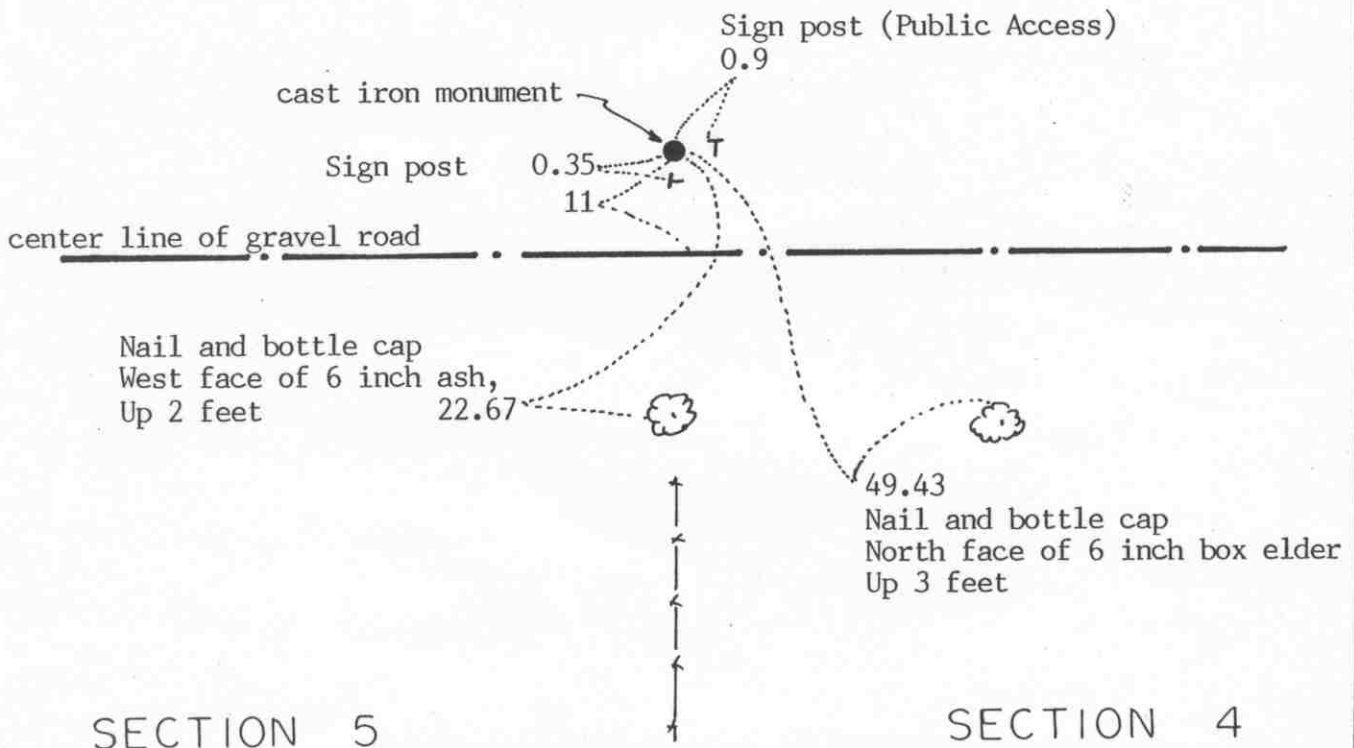
The monument set by Knutson is accepted as the location of the quarter corner. It perpetuates the location of an older monument (the stone) which we believe is the same stone found by Higgins in 1939.

June 18, 1993. No old ties remaining. We found the monument in good condition and took available ties.

NORTHEAST corner, Section 5, Township 116 North, Range 28 West

# Certificate of Location of Government Corner

SKETCH OF REFERENCE TIES  
(NO SCALE)



Statement of evidence relative to this corner location on sheet 2

I hereby certify that this document  
was prepared by me or under my  
direct supervision.

Willard Pellinen

Willard Pellinen  
McLeod County Surveyor  
License No. 9626

Date August 12, 1993

OFFICE OF THE COUNTY RECORDER  
MCLEOD COUNTY, MINNESOTA.

I hereby certify that this document was filed in this  
office at 9 o'clock A. M. on the 18th day  
of August, 19 93.

Armen B. St. R. Mulder, County Recorder

By \_\_\_\_\_, Deputy

Document No. 254230

NORTHEAST corner, Section 5, Township 116 North, Range 28 West

## *Certificate of Location of Government Corner*

September, 1856. D. L. Langton of the General Land Office originally established this corner. He set a post and marked two 6 inch aspens for bearing trees.

November, 1968. McCombs Knutson Associates (Dickman Knutson, county surveyor) found a 1 inch diameter iron pin along the east-west fence in line with a fence to the south. This was about 10 feet north of the center line of the east-west road. Knutson took reference ties and replaced the iron pin with a McLeod County cast iron monument.

The monument set by Knutson is accepted as the section corner. It fits occupation lines, the fences, and it perpetuates the location of an older monument.

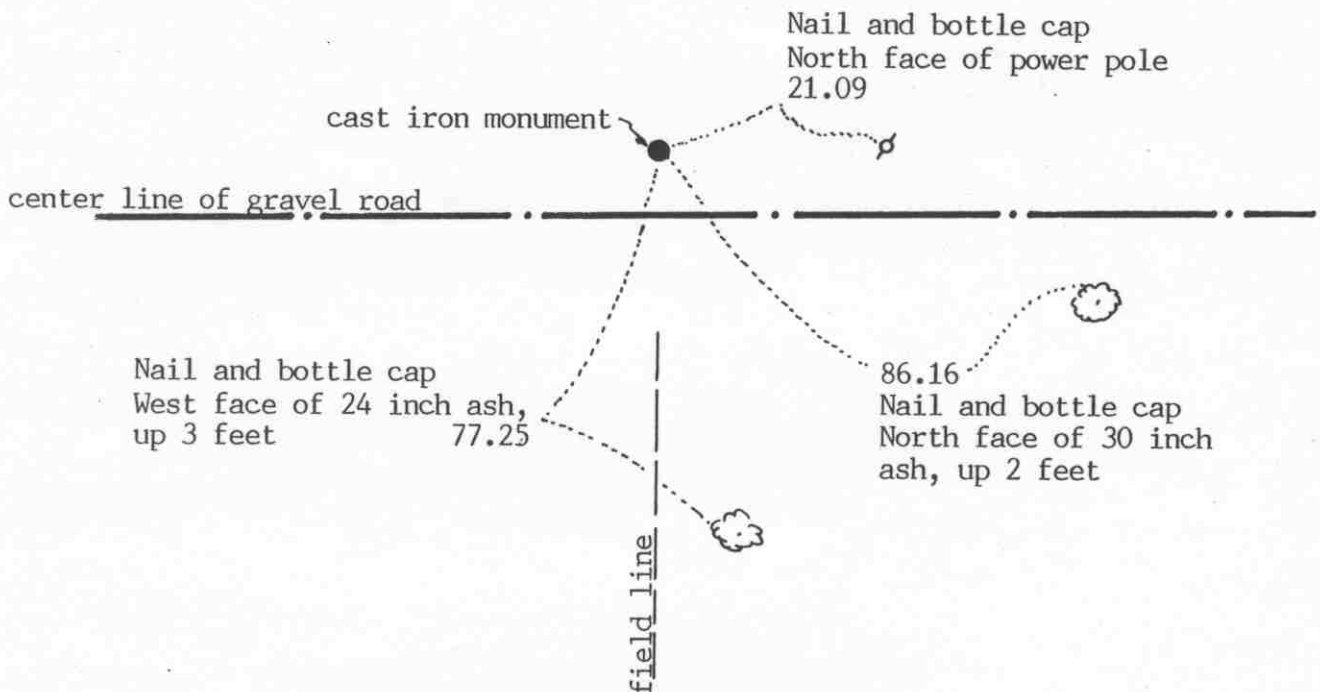
June 17, 1993. We found the monument in good condition and took new reference ties.

NORTH QUARTER corner, Section 5, Township 116 North, Range 28 West

# Certificate of Location of Government Corner

## SKETCH OF REFERENCE TIES

(NO SCALE)



Statement of evidence relative to this corner location on sheet 2

I hereby certify that this document  
was prepared by me or under my  
direct supervision.

Willard Pellinen

Willard Pellinen  
McLeod County Surveyor  
License No. 9626

Date August 12, 1993

## OFFICE OF THE COUNTY RECORDER MCLEOD COUNTY, MINNESOTA.

I hereby certify that this document was filed in this  
office at 9 o'clock A. M. on the 18th day  
of August, 1993.

Carman St. Lie M. J. J. J., County Recorder

By \_\_\_\_\_, Deputy

Document No. 254232



NORTH QUARTER corner, Section 5, Township 116 North, Range 28 West

## *Certificate of Location of Government Corner*

June 18, 1899. E. L. Higgins, county surveyor, found an oak stake at the corner. He had a distance of 2620 feet to the northwest corner and 2640 feet to the northeast corner of Section 5.

November, 1968. McCombs Knutson Associates (Dickman Knutson, county surveyor) found an iron pin approximately 2620 feet east of the northwest corner of the section. Knutson replaced the iron pin with a McLeod County cast iron monument and took reference ties.

April 23, 1986. We found the monument gone so we reset a cast iron monument using the 1968 ties.

The cast iron monument set is accepted as the quarter corner. It within  $\frac{1}{2}$  foot of being the same distance from the northwest corner of the section as Higgins had in 1899. It is within 5 feet of being midway between the section corners and within a tenth of a foot of being on the standard parallel.

June 17, 1993. We found the monument in good condition and took new reference ties.

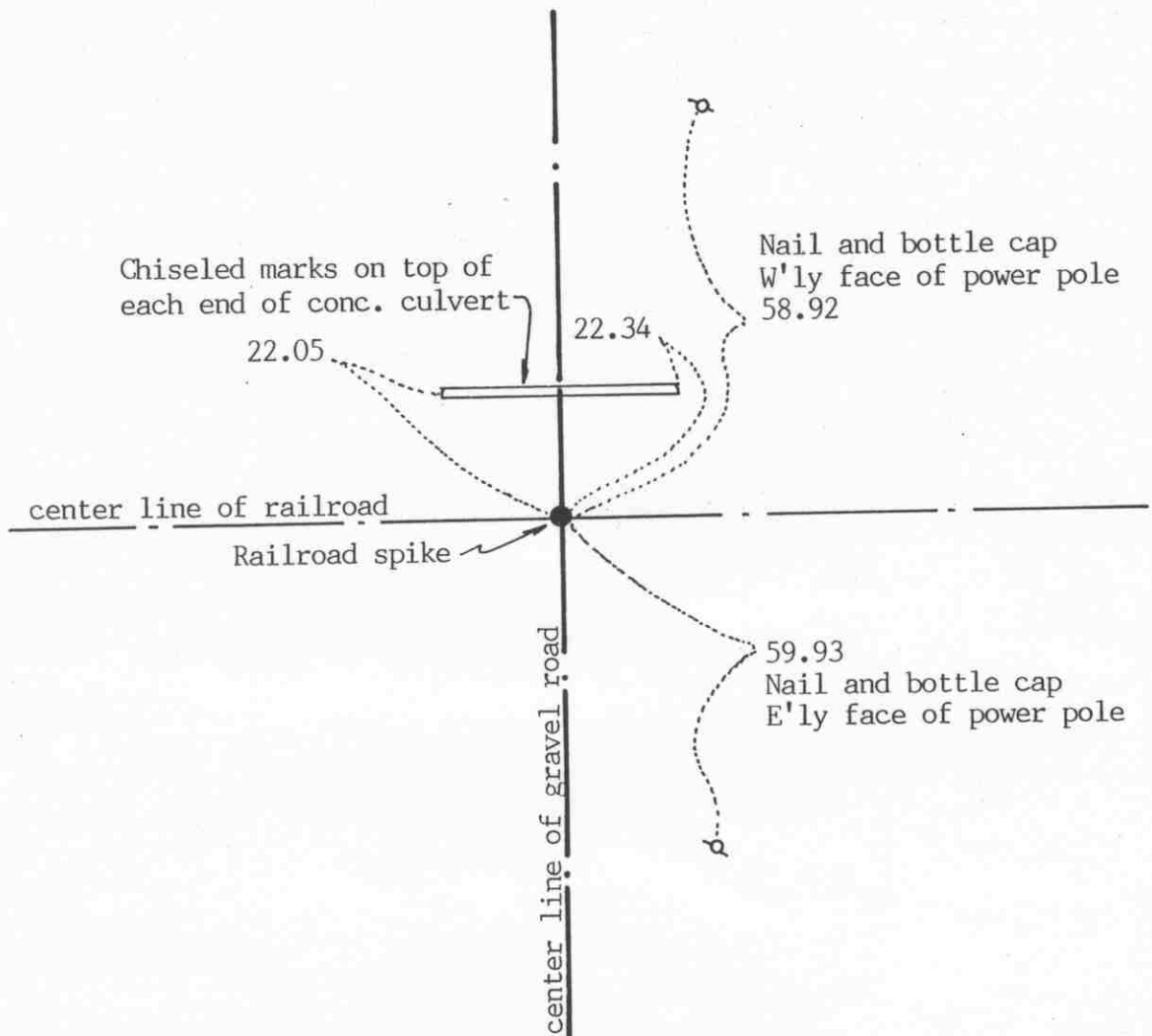
EAST QUARTER corner, Section 6, Township 116 North, Range 28 West

## Certificate of Location of Government Corner

SKETCH OF REFERENCE TIES  
(NO SCALE)

SECTION 6

SECTION 5



Statement of evidence relative to this corner location on sheet 2

I hereby certify that this document was prepared by me or under my direct supervision.

Willard Pellinen

Willard Pellinen  
McLeod County Surveyor  
License No. 9626

Date July 21, 1993

OFFICE OF THE COUNTY RECORDER  
MCLEOD COUNTY, MINNESOTA.

I hereby certify that this document was filed in this office at 4 o'clock P.M. on the 27th day of July, 19 93.

Armen B. Miller County Recorder

By \_\_\_\_\_, Deputy

Document No. 253812

EAST QUARTER corner, Section 6, Township 116 North, Range 28 West*Certificate of Location of Government Corner*

September, 1856. This corner was originally established by the General Land Office. D. L. Langton set a post and marked an 8 inch aspen and a 5 inch cherry for bearing trees.

June 18, 1899. E. L. Higgins, county surveyor, measured 2640 feet to the southeast corner of Section 6.

1939. E. L. Higgins did a survey along the east line of Section 6.

The railroad right of way map shows the quarter corner to be on the center line of the tracks.

January 24, 1972. McCombs Knutson Associates (Dickman Knutson, county surveyor) measured the east line of the southeast quarter of section 6 and had approximately the same distance as Higgins had in 1899.

August 22, 1973. Knutson set a railroad spike at the intersection of the center line of the railroad and the north-south road and took available reference ties.

June 14, 1979. Knutson reset a railroad spike at the corner using the 1973 ties.

February 23, 1981. We found the railroad spike and checked the reference ties.

The corner set by Knutson is accepted as marking the quarter corner. It fits long standing occupation lines (the center line of the road and center line of the railroad).

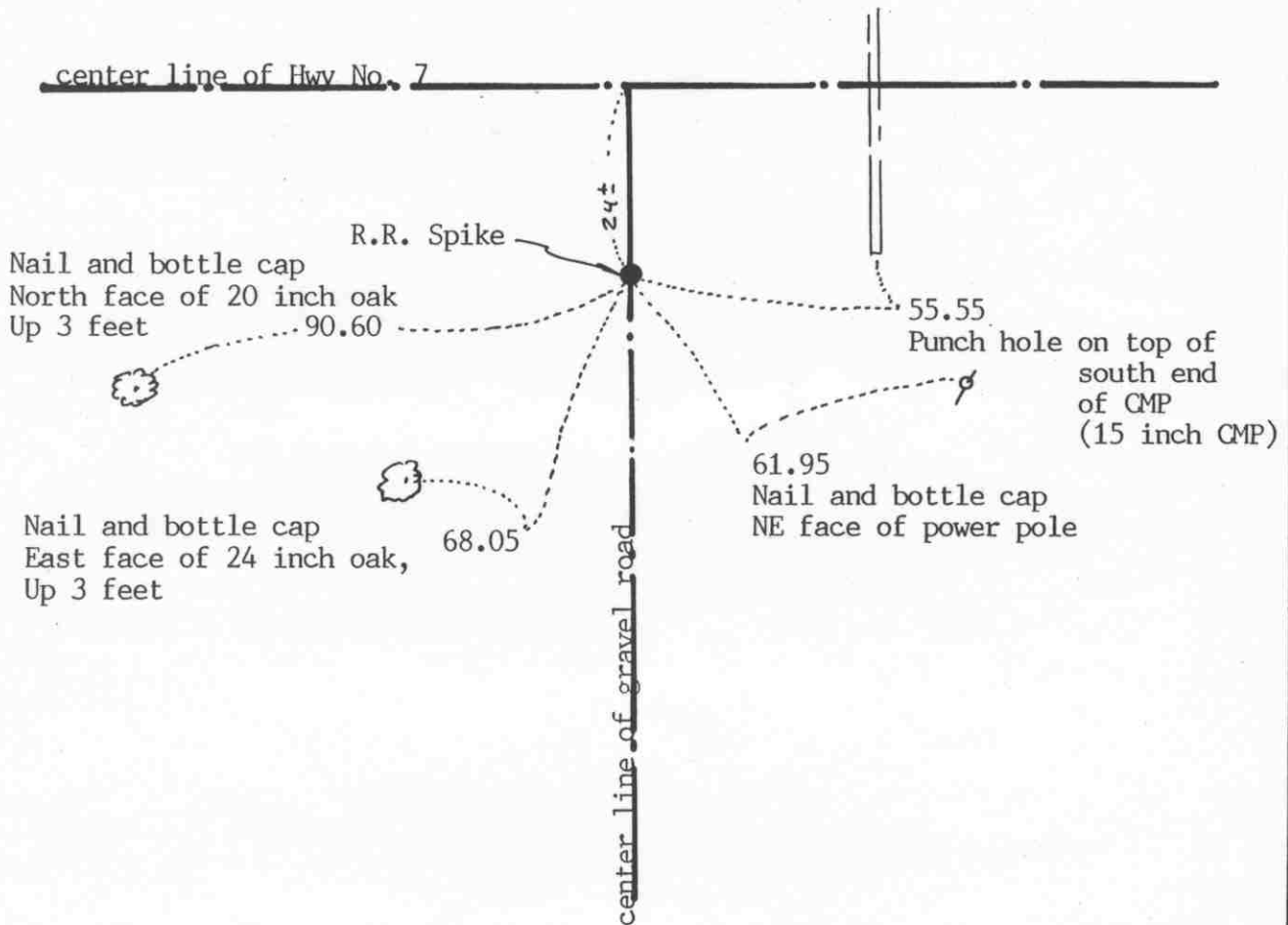
March 31, 1993. We found the railroad spike and checked the reference ties.

NORTHEAST corner, Section 6, Township 116 North, Range 28 West



# Certificate of Location of Government Corner

## SKETCH OF REFERENCE TIES (NO SCALE)



Statement of evidence relative to this corner location on sheet 2

I hereby certify that this document  
was prepared by me or under my  
direct supervision.

Willard Pellinen

Willard Pellinen  
McLeod County Surveyor  
License No. 9626

Date August 13, 1993.

OFFICE OF THE COUNTY RECORDER  
MCLEOD COUNTY, MINNESOTA.

I hereby certify that this document was filed in this  
office at 9 o'clock A.M. on the 18th day  
of August, 19 93.

Carmin Ottilie Mulder, County Recorder

By \_\_\_\_\_, Deputy

Document No. 254233

NORTHEAST corner, Section 6, Township 116 North, Range 28 West*Certificate of Location of Government Corner*

1856. D. L. Langton of the General Land Office originally established this corner. He set a post and marked a 5 inch aspen and a 4 inch cherry tree for bearing trees.

State Highway right of way map shows the corner to be 37.5 feet south of center line P.O.T. 359+48.5.

1969. Dickman Knutson, McLeod County Surveyor, set a  $\frac{1}{2}$  inch diameter iron pipe at the corner using information shown on the highway right of way map and took available ties.

March 30, 1971. Knutson checked the corner and found it to be approximately 13 feet south of the standard parallel.

1979. We found the iron pin below the bituminous surface and set a railroad spike at the surface and took new ties.

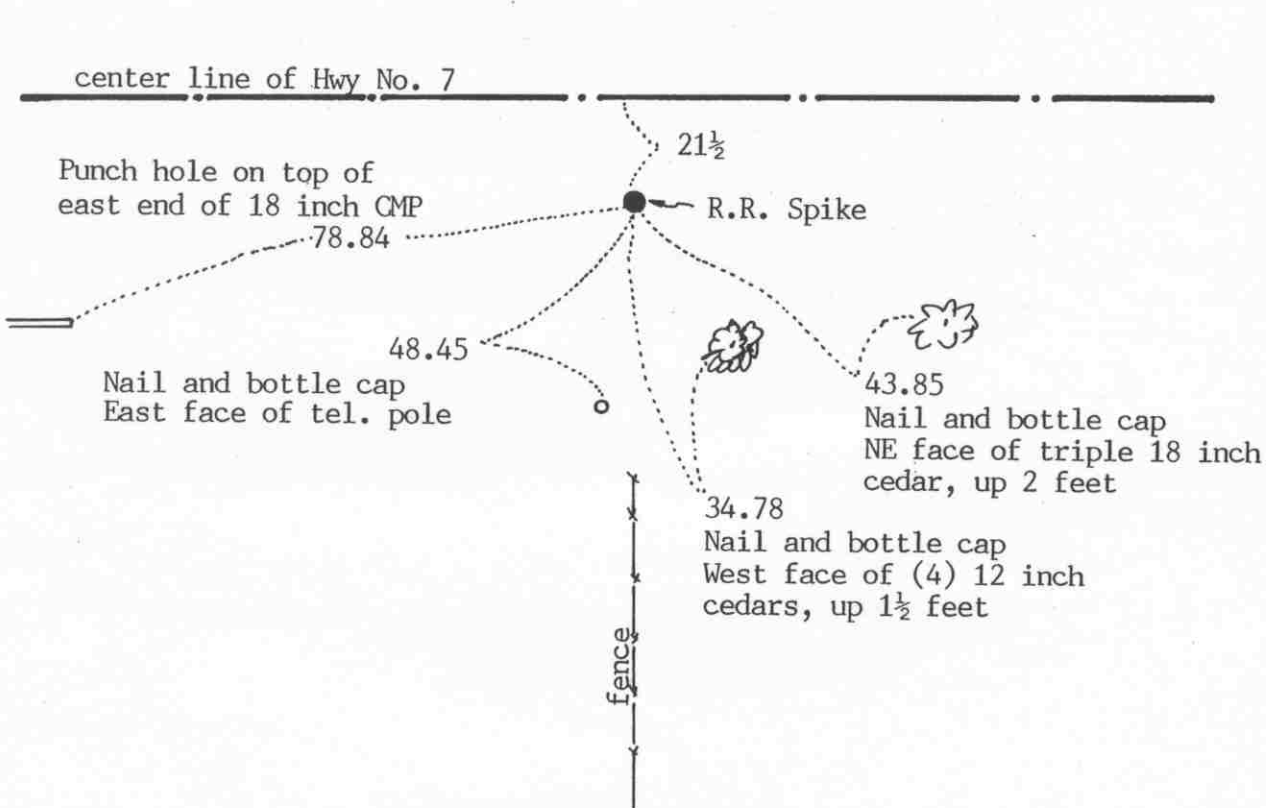
June 18, 1993. We reset the corner on the standard parallel, on line between the southwest corner of Section 32 and the south quarter corner of Section 32, T117, R28. This fell about 13.5 feet north of the old location of the corner. We took available reference ties.

NORTH QUARTER corner, Section 6, Township 116 North, Range 28 West

# Certificate of Location of Government Corner

## SKETCH OF REFERENCE TIES

(NO SCALE)



Statement of evidence relative to this corner location on sheet 2

I hereby certify that this document was prepared by me or under my direct supervision.

Willard Pellinen

Willard Pellinen  
McLeod County Surveyor  
License No. 9626

Date August 13, 1993

## OFFICE OF THE COUNTY RECORDER MCLEOD COUNTY, MINNESOTA.

I hereby certify that this document was filed in this office at 9 o'clock A.M. on the 18th day of August, 1993.

Carmen Estlin Mulder, County Recorder

By \_\_\_\_\_, Deputy

Document No. 254234

NORTH QUARTER        corner, Section 6, Township 116 North, Range 28 West*Certificate of Location of Government Corner*

1969. McCombs Knutson Associates (Dickman Knutson, county surveyor) set a  $\frac{1}{2}$  inch diameter iron pin on line between the South quarter corner and the Southeast corner of Section 31, Township 117, Range 28, in line with a fence to the south. Knutson took reference ties.

October 13, 1979. We reset the corner using the 1969 reference ties and set a railroad spike at the corner. This was within 6± feet of a lost location for the corner.

June 18, 1993. We found the railroad spike at the surface of the bituminous shoulder and took new reference ties.

**CERTIFICATE OF LOCATION OF GOVERNMENT CORNER**

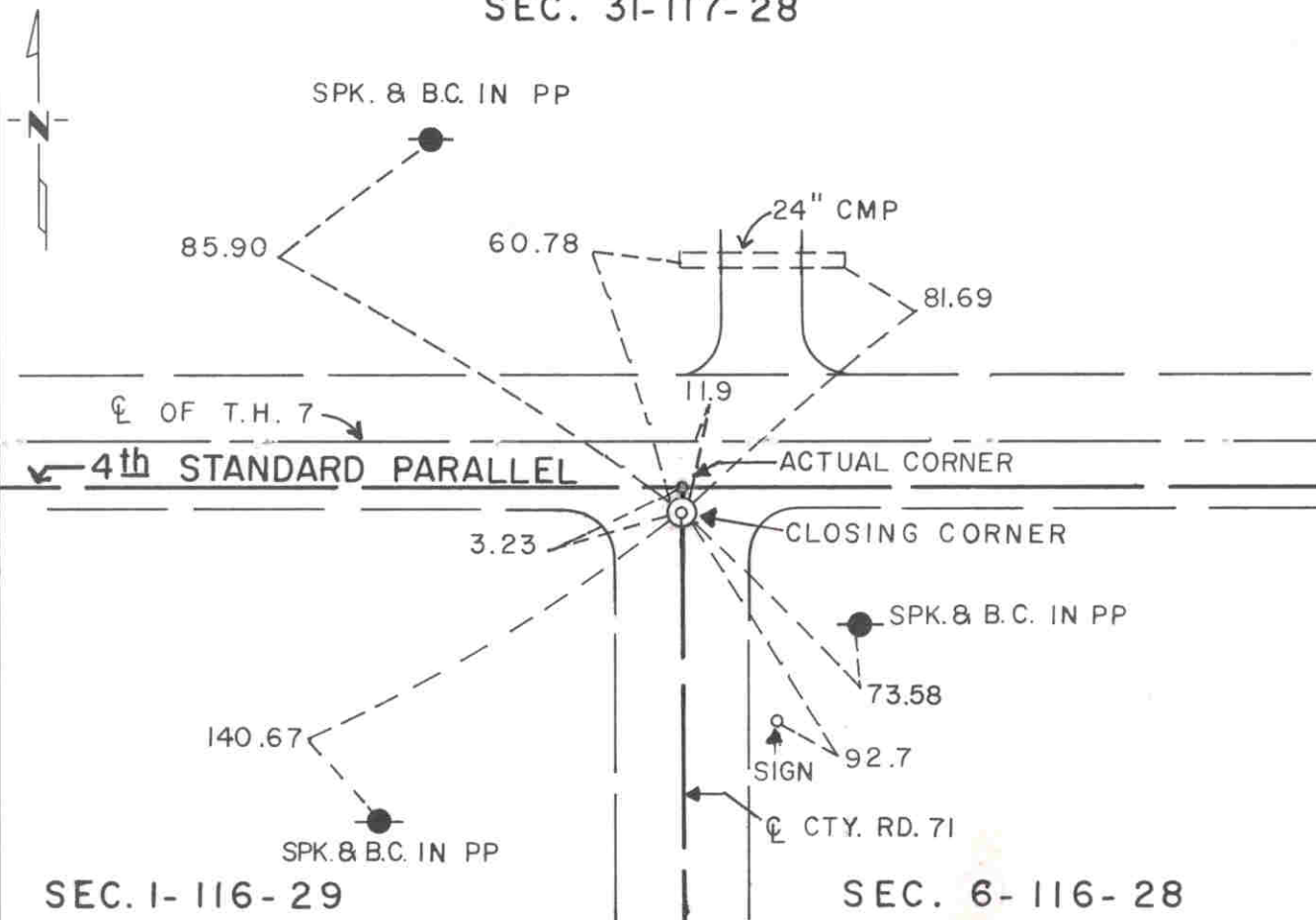
CLOSING CORNER TO

THE NORTHEASTCorner of Section 1,Township 116 N,Range 29 W,5<sup>th</sup>

P.M.

STATE OF MINNESOTA, County of MCLEOD

At the corner location shown on the sketch:

☒ On FEB. 1991 found a RAILROAD SPIKE AT THE ROAD SURFACE  
DATE☒ left monument as found, ☐ lowered monument, ☐ removed monument (explain)☐ On \_\_\_\_\_ placed a \_\_\_\_\_  
DATESKETCH OF REFERENCE TIES  
SEC. 31-117-28

Statement of evidence relative to this corner location is on back of page.

I hereby certify that this document and the data contained herein was prepared by me or under my direct supervision.

Robert Jones  
SIGNATURE7-22-92  
DATERegistration No. 11864☒ Land Surveyor, ☐ Professional Engineer☐ County Surveyor, ☐ County Engineer

## OFFICE OF THE COUNTY RECORDER

County of McLeodI hereby certify that this document was filed in the Co. Recorders office at 9 A. .M. on the 29th day of July A.D., 1992County Recorder Carmen Estlie

By \_\_\_\_\_, Deputy

DOCUMENT NO. 246730



- 1855 - The original Public Land Survey of the township line was completed by John Ryan. A wood post was set to mark the corner with reference to two bearing trees.
- 1937 - The Minnesota Highway Department right of way map shows the corner to be 11.9 feet south of T.H. 7 P.O.T. 306+19.2. This appears to have been about 5 feet north of the centerline of the existing east/west road and about in line with the centerline of a road to the south.
- 1938 - All evidence of this corner was probably destroyed when T.H. 7 was graded.
- 1968 - Dickman Knutson, McLeod County Surveyor, found a spike and disc 11.9 feet south of the centerline of T.H. 7 on the centerline of County Road 71 to the south. He set reference ties to the spike.
- 1979 - Dickman Knutson set a railroad spike using the old reference ties.
- 1982 - Willard Pellinen recovered the railroad spike.
- 1991 - A Mn/DOT survey crew (Gene East, crew chief) found the railroad spike at the road surface. It is located 11.64 feet south of T.H. 7 P.O.T. 306+19.24 at the centerline of County Road 71 to the south.

The railroad spike is accepted as the location of the closing corner because it fits the location shown on the highway right of way map. The actual location of the northeast corner of the section is 3.23 feet north of the closing corner on the Fourth Standard Parallel.

For additional information, contact the Mn/DOT Surveys Section at Willmar, Mn 56201.

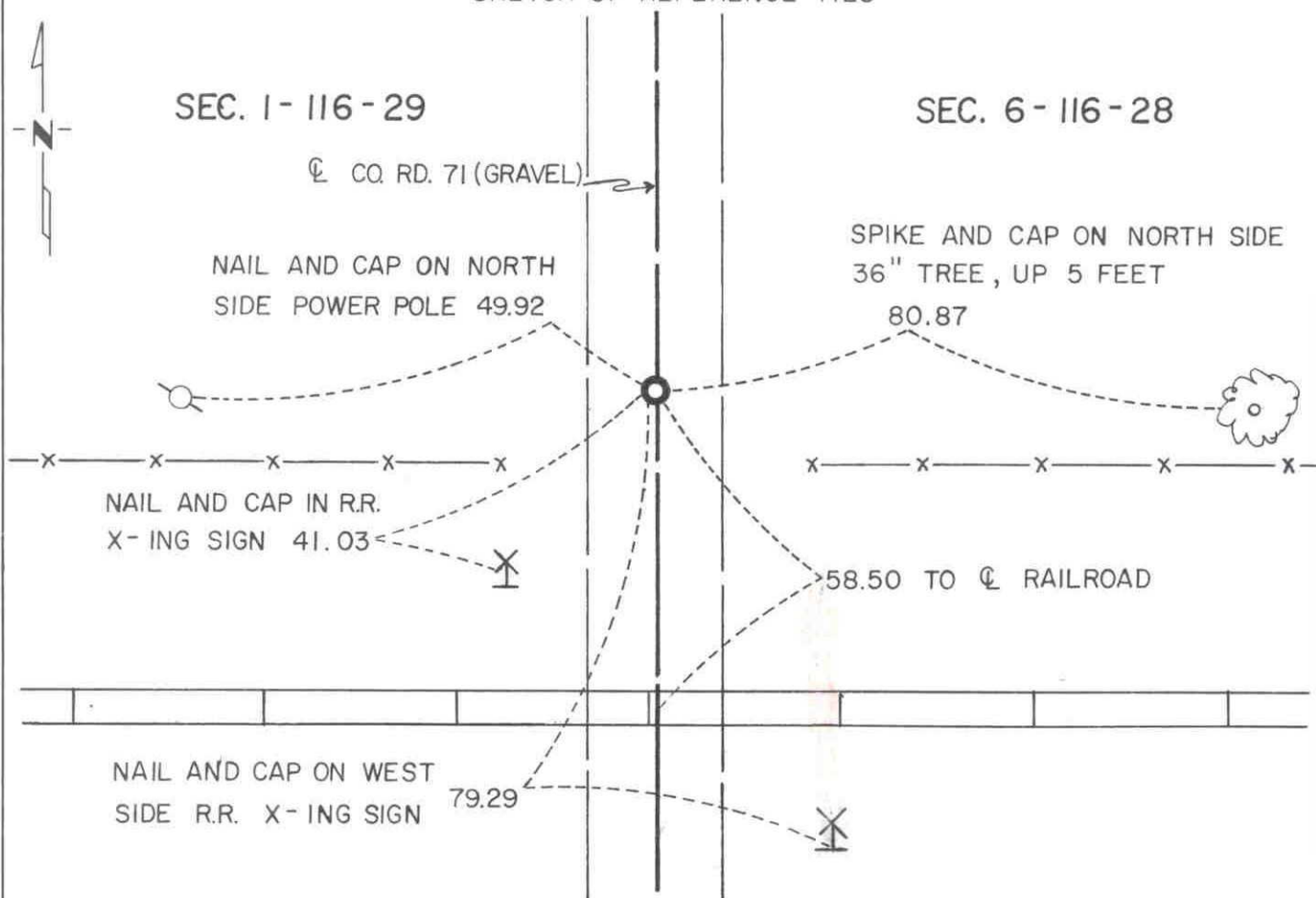
# CERTIFICATE OF LOCATION OF GOVERNMENT CORNER

EAST QUARTER Corner of Section 1, Township 116 N, Range 29 W, 5<sup>th</sup> P.M.  
STATE OF MINNESOTA, County of MCLEOD

At the corner location shown on the sketch:

- ☒ On FEB. 1991 found a CAST IRON MONUMENT A FEW INCHES BELOW  
DATE THE ROAD SURFACE
- ☒ left monument as found, ☐ lowered monument, ☐ removed monument (explain)
- ☒ On FEB. 1991 placed a P.K. NAIL AT THE ROAD SURFACE DIRECTLY  
DATE OVER THE CAST IRON MONUMENT

SKETCH OF REFERENCE TIES



Statement of evidence relative to this corner location is on back of page.

I hereby certify that this document and the data contained herein was prepared by me or under my direct supervision.

Robert Jones 7-22-92  
SIGNATURE DATE

Registration No. 11864

- ☒ Land Surveyor, ☐ Professional Engineer  
☐ County Surveyor, ☐ County Engineer

OFFICE OF THE COUNTY RECORDER

County of McLeod

I hereby certify that this document was filed in the Co. Recorders office at 9 A. M. on the 29<sup>th</sup> day of July A.D., 1992

County Recorder Norman Ostlie

By \_\_\_\_\_, Deputy

DOCUMENT NO. 246731

- 1855 - The original Public Land Survey of the township line was completed by John Ryan. A wood post was set to mark the corner with reference to two bearing trees.
- 1970 - Dickman Knutson, McLeod County Surveyor, set a cast iron monument at the corner. According to his notes, it was located 58.50 feet north of the centerline of the railroad as shown on the railroad map and on the centerline of north/south County Road 71.
- 1982 - Willard Pellinen, McLeod County Surveyor, found that the cast iron monument set by Knutson was gone. A new cast iron monument was set according to Knutson's reference ties.
- 1990 - Willard Pellinen recovered the cast iron monument about 10" below the road surface and set new reference ties.
- 1991 - A Mn/DOT survey crew (Gene East, crew chief) recovered the cast iron monument a few inches below the road surface and placed a P.K. nail over it at the road surface. It was located as shown in Pellinen's notes.

The cast iron monument is accepted as the corner location because it fits long standing occupation lines and it is 0.62 ft. west and 4.43 ft. north of the lost location.

For additional information, contact the Mn/DOT Surveys Section at Willmar, Mn 56201.